

HITEMP150

EXTENDED RANGE TEMPERATURE RECORDER

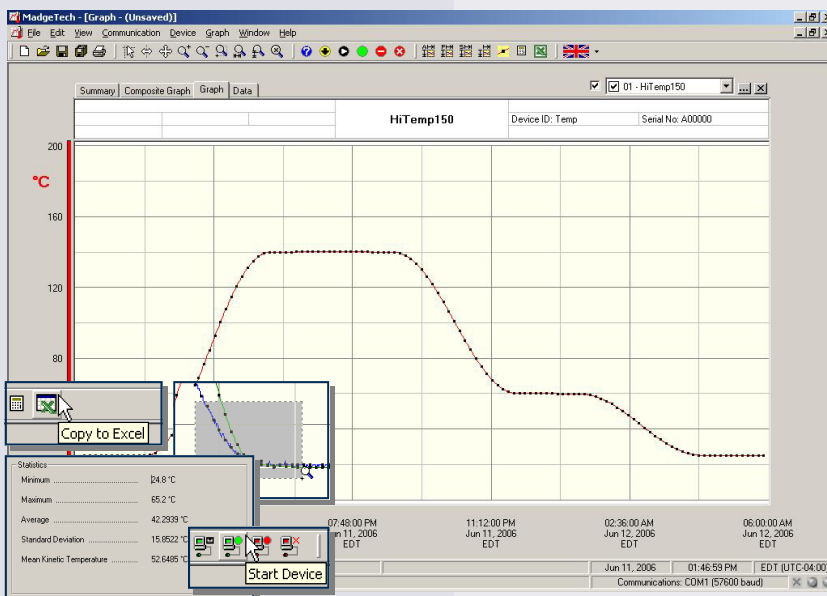
Features

- Extended temperature range
- Rugged
- Reusable
- Submersible
- Programmable start time
- Real-time operation
- N.I.S.T. traceable
- User-friendly
- Low cost

Applications

- Autoclave Verification
- Medical/Pharmaceutical
- Implement HACCP Programs
- Food preparation and processing
- Environmental studies
- Well monitoring
- Dish washer testing
- Hostile environment monitoring

The HiTemp150 temperature logger is a rugged, submersible, battery powered, stand alone device which can be used to automatically record temperatures between -40 and 150°C. This all in one compact, portable, easy to use device is able to measure and record up to 32,767 temperature measurements. The HiTemp150 features a 2" rigid external probe⁺ with fast response time to ensure accurate temperature readings and is ideal for use in harsh environments. Its real time clock ensures that all the data is time and date stamped. The storage medium is non-volatile solid state memory, providing maximum data security even if the battery becomes discharged. The device can be started and stopped directly from your computer and its small size allows it to fit almost anywhere. The HiTemp150 makes data retrieval quick and easy. Simply plug the device into an empty COM or USB port and our user-friendly software does the rest.



MadgeTech Data Recorder Software

Reports temperature data in an easy to use graph.

The Windows®-based software package allows the user to effortlessly collect, display and analyze data. A variety of powerful tools allow you to examine, export, and print professional looking data with just a click of the mouse.

Click [MadgeTech Software](#) for more information or to download the software.

HITEMP150 SPECIFICATIONS*

Temperature Sensor: 100Ω Platinum RTD	Calibration: Digital calibration through software
Temperature Range: -40 to +150°C	Calibration Date: Automatically recorded within device
Temperature Resolution: 0.05°C	Power: 3.9V high-temperature lithium battery included
Calibrated Accuracy: ±0.5°C	Battery Life: 1 year typical (1 minute reading rate @ 25°C)
Start Time: Software programmable start time and date, up to six months in advance	Data Format: Date and time stamped °C, °F, K, °R
Real Time Recording: May be used with PC to monitor and record data in real time	Time Accuracy: ±1 minute/month at 20°C (RS232 cable not in use)
Memory: 32,767 readings	Computer Interface: PC serial or USB (Interface cable required); 2,400 baud
Reading Interval: 1 reading every 2 seconds to 1 every 12 hours	Software: Windows 95/98/ME/NT/2000/XP based software
	Operating Environment: -40 to +150°C, 0 to 100%RH
	Dimensions (Body): 1.1" x 1.75" dia. (28mm x 45mm dia.)
	Dimensions (Probe): 2.0" x 3/16" dia. (51mm x 5mm dia.)
	✦ <i>Other probes available</i>
	Weight: 8 oz (225 g)
	Material: 316 Stainless Steel
	Approvals: CE

WARNING: FIRE, EXPLOSION, AND SEVERE BURN HAZARD. DO NOT SHORT CIRCUIT, CHARGE, FORCE OVERDISCHARGE, DISASSEMBLE, CRUSH, PENETRATE OR INCINERATE. BATTERY MAY LEAK OR EXPLODE IF HEATED ABOVE 150° C (302° F).

SOFTWARE FEATURES

Multiple Graphs:	Simultaneously analyze data from several units or deployments; easily switch to a single data series	Statistics:	Calculate averages, min, max, standard deviation, and mean kinetic temperature with the touch of a button
Real-Time Recording:	Collect and display data in real-time while continuing to log	Export Data:	Export data in a variety of common formats, or switch to Excel® with a single click
Graphical Cursor:	One click displays readings by time, value, parameter or sample number	Calibration:	Automatically calculate and store calibration parameters
Data Table:	Instantly access tabular view for detailed dates, times, values, and annotations	Logger Configuration:	Easy set up and launch of data loggers with immediate or delayed start, preferred sample rate, and device ID
Scaling Options:	Autoscale function fits data to the screen, or allows user to manually enter their own values	Communications:	Automatically sets up communications port, or lets user select configuration
Formatting Options:	Change colors, line styles, plotting options, show or hide channels quickly	Printing:	Automatically print graphical or tabular data

*SPECIFICATIONS ARE SUBJECT TO CHANGE WITHOUT NOTICE. SPECIFIC WARRANTY AND REMEDY LIMITATIONS APPLY. CALL 1-603-456-2011 OR GO TO WWW.MADGETECH.COM FOR DETAILS.

ORDERING INFORMATION

<u>Model</u>	<u>Description</u>	
HITEMP150	Extended Range Temperature Recorder	
IFC110	Software, manual and RS232 interface cable	
IFC200	Software, manual and USB interface cable	
NIST	N.I.S.T. Calibration Certificate	
3B5700	Replacement battery for HiTemp150	

For Quantity Discounts call 603-456-2011 or email sales@madgetech.com

ASK ABOUT OUR OTHER DATA RECORDERS

Temperature	Pulse/Event/State
Humidity	Low Level Current
Pressure	Low Level Voltage
pH	RF Transmitters
Level	Intrinsically Safe
Shock	Spectral Vibration

